

# Sand Lake

---

Page 1: AIS Monitoring of July 24,  
2014



Land & Water Conservation Department

Jean Hansen, County Conservationist  
Michele Sadauskas, AIS Coordinator  
Jonna Stephens Jewell, Program Assistant

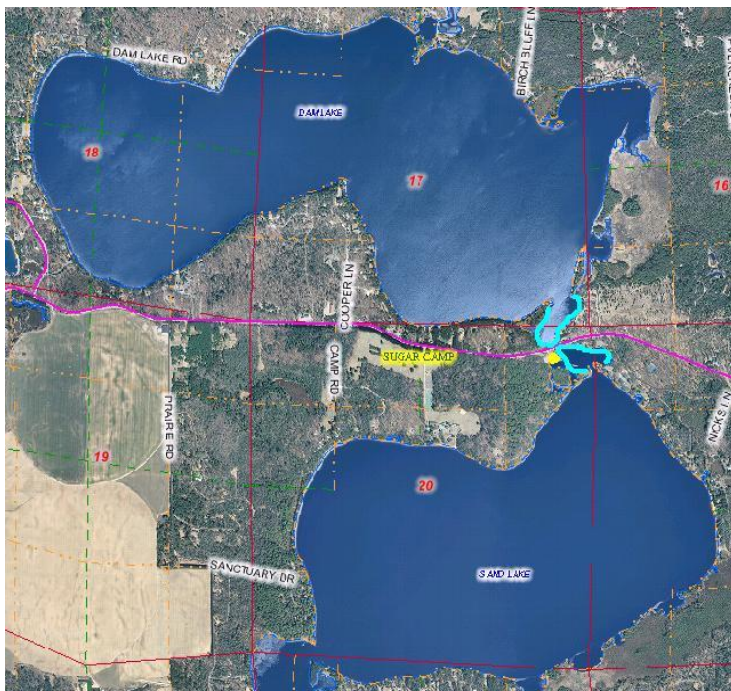
Oneida County Courthouse  
P O Box 400, Rhinelander, Wisconsin 54501  
Phone (715) 369-7835 Fax (715) 369-6268

## Sand Lake AIS Monitoring and Water Clarity Report

WBIC: 1597000  
 Previous AIS Findings: Chinese Mystery Snail, Rusty Crayfish  
 New AIS Findings: Purple Loosestrife  
 Field Date: July 24, 2014  
 Field Crew: Stephanie Boismenu and Alyssa Nycz, AIS Project Assistants,  
 Oneida County Land and Water Conservation Department  
 Report by: Alyssa Nycz

Stephanie and I went to the Sand/Dam boat landing on Thursday, July 24<sup>th</sup> to investigate a report of Eurasian Water Milfoil (EWM). We launched our canoe and paddled around the bridge, the bay across from the landing, and around the entrance into Dam Lake (Figure 1). We used an Aquascope to identify plants in these areas. While we identified a number of plant species that are commonly mistaken for EWM, we did not see any of the invasive species.

While searching for the presence of EWM, Stephanie and I came across two algae colonies that appeared to be blue-green algae. The algae was oil-like in nature and had bubbles on its surface in one location. We used a sampling bottle and plastic bags to collect some of the algae, which Stephanie later took to the DNR to be identified. We also obtained GPS coordinates of both algae locations. Additionally, we identified a colony of purple loosestrife growing in the right side of the bay across from the boat landing. We obtained GPS coordinates of the purple loosestrife colony.



**Figure 1.** The yellow dot marks the boat landing. The light blue outlines are representing areas that we monitored.

**Purple Loosestrife Sighting on Sand Lake, Town of Sugar Camp, Oneida County, WI**

**WDNR WBIC:** 1597000

**LOCATION:** Latitude 45.856956 Longitude -89.384905

**DATE:** July 24, 2014

Discovered and entered into SWIMS by Oneida County Land and Water Conservation Department, AIS Project Assistant's Stephanie Boismenu and Alyssa Nycz.

