

Maple Lake

Page 1: AIS Shoreline Only Monitoring
of July 21st, 2017



Maple Lake Shoreline Only AIS Monitoring Report

WBIC: 1609900
Previous AIS Findings: Banded Mystery Snail, Chinese Mystery Snail, Curly-Leaf Pondweed
New AIS Findings: Purple Loosestrife
Field Date: July 21st, 2017
Field Crew: Aubrey Nycz, AIS Project Leader and Thomas Boisvert, AIS Project Assistant, Oneida County Land and Water Conservation Department
Report by: Thomas Boisvert

On July 21st, 2017, Aubrey Nycz, AIS Project Leader and Thomas Boisvert, AIS Project Assistant, headed to Maple Lake to attend to a concern about Purple Loosestrife. When on Maple Lake, Aubrey and Tom had confirmed that Purple Loosestrife was located along the northeast corner of the lake. After confirming this, a complete shoreline scan was done to look for more Purple Loosestrife and other possible invasives. After completing the full shoreline scan it was clear that the Purple Loosestrife has not spread anywhere else at the moment, and there were no other new invasives along the shoreline.

The Oneida County AIS team would recommend a beetle treatment for the affected area next year, and to clip the flowers in the meantime, before seeding starts to occur.

Findings:

Aquatic Invasive Species:

Purple Loosestrife was found on Maple Lake. This invasive has not been recorded here in the past.

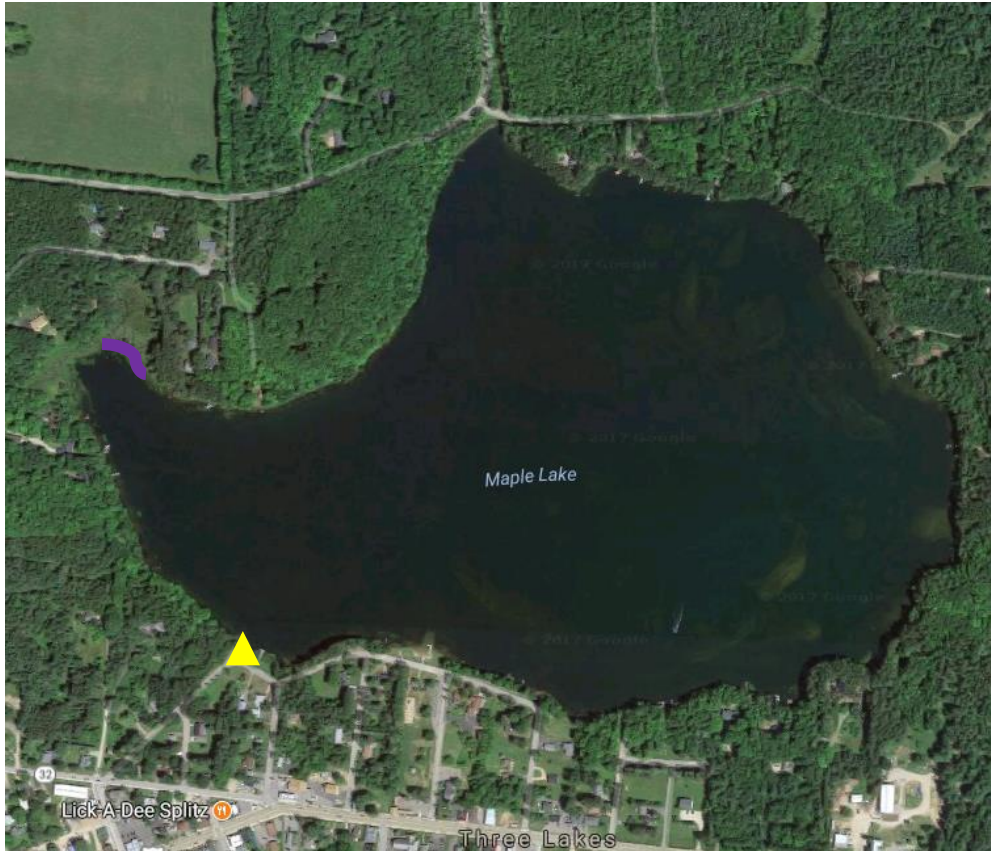


Figure 1. Map of Maple Lake with the public boat landing represented by a yellow triangle, and Purple Loosestrife patch represented by a purple line.



Figure 2. Map of Oneida County, WI with the approximate location of Maple Lake circled in red.