

# Buckskin Lake

---

Page 1:        AIS Monitoring and Water  
                  Clarity Report of July 22, 2015



Land & Water Conservation Department

Jean Hansen, County Conservationist  
Michele Sadauskas, AIS Coordinator  
Jonna Stephens Jewell, Program Assistant

Oneida County Courthouse  
P O Box 400, Rhinelander, Wisconsin 54501  
Phone (715) 369-7835 Fax (715) 369-6268

### Buckskin Lake AIS Monitoring and Water Clarity Report

WBIC: 2272600  
 Previous AIS Findings: Chinese Mystery Snails  
 New AIS Findings: Purple Loosestrife, Unconfirmed Yellow Iris  
 Field Date: July 22, 2015  
 Field Crew: Stephanie Boismenu and Sara Mills, AIS Project Assistants,  
 Oneida County Land and Water Conservation Department  
 Report by: Sara Mills

Stephanie and I monitored Buckskin Lake on July 22, 2015. It is a 642 acre lake located in the town of Minocqua (Figure 1). The lake is positioned on the border of Oneida and Vilas counties. It is a spring fed lake with a maximum depth of 22 feet. There is a public boat landing. The Vilas county portion of the lake is bordered by Lac du Flambeau Reservation land. The WDNR lists Buckskin Lake’s trophic state index as eutrophic. Eutrophic lakes are characterized by an excessive amount of nutrients, allowing the lake to support an abundance of plants and algae.

The Buckskin Lake Improvement Association assisted in our lake monitoring. We entered the lake at a lake association member’s residence and utilized their pontoon boat for the day. Using the bathymetric map (Figure 2), we navigated to the deep hole of the lake. We collected water quality and clarity samples at the deep hole site (Table 1). Since we were on a pontoon boat, we were able to do a spiny water flea tow and a zebra mussel tow with nets provided by the WDNR.

After data collection, we went to five locations on the lake shore to perform an AIS presence/absence check. The protocol for this process is to complete a visual inspection of the littoral zone along 100 feet of the shoreline in each area. We chose five areas around private docks with motorized watercrafts and the public boat landing (Figure 3). For the five locations of AIS presence/absence checks, we meandered the shoreline via walking along the shoreline, using an aquascope to eliminate the glare on the water surface, looking through vegetation, and checking around and under solid surfaces. In addition to the five presence/absence checks, we also visually inspected from the boat for the entire shoreline of the lake. We also visited the residence of another lake association member who had reported having purple loosestrife on her property.

#### Findings:

##### Aquatic Invasive Species:

The lake was already known to have Chinese mystery snails, which we found during most of our presence/absence checks. The plant on the property of the lake association member was

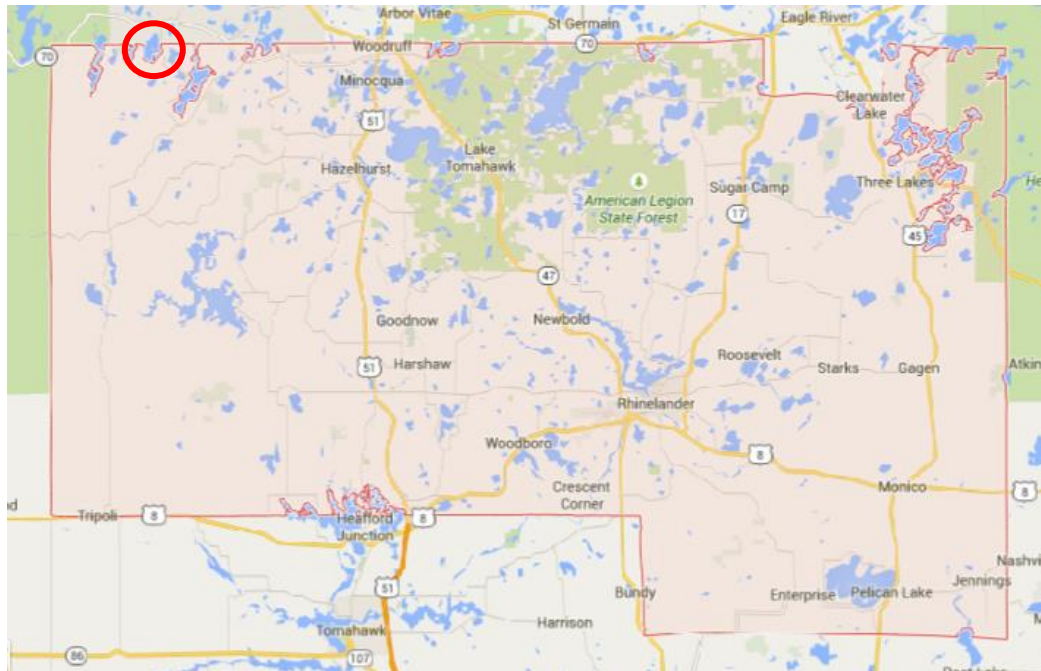
confirmed by us to be purple loosestrife, but no other purple loosestrife plants were found. During one of our presence/absence checks, we found a suspected yellow iris plant next to a private dock. The homeowner was there and Stephanie took a sample that was taken to the DNR station in Rhinelander for analysis. The analysis could not be conclusive because our specimen did not have identifying features. The iris was not flowering at the present time, but the homeowner confirmed that the flowers are yellow. No other yellow iris plants were found. The water samples from the zebra mussel veliger and spiny water flea tows were also taken to the DNR station for analysis. We obtained GPS coordinates for all new AIS discovery locations (Figure 4).

Secchi:

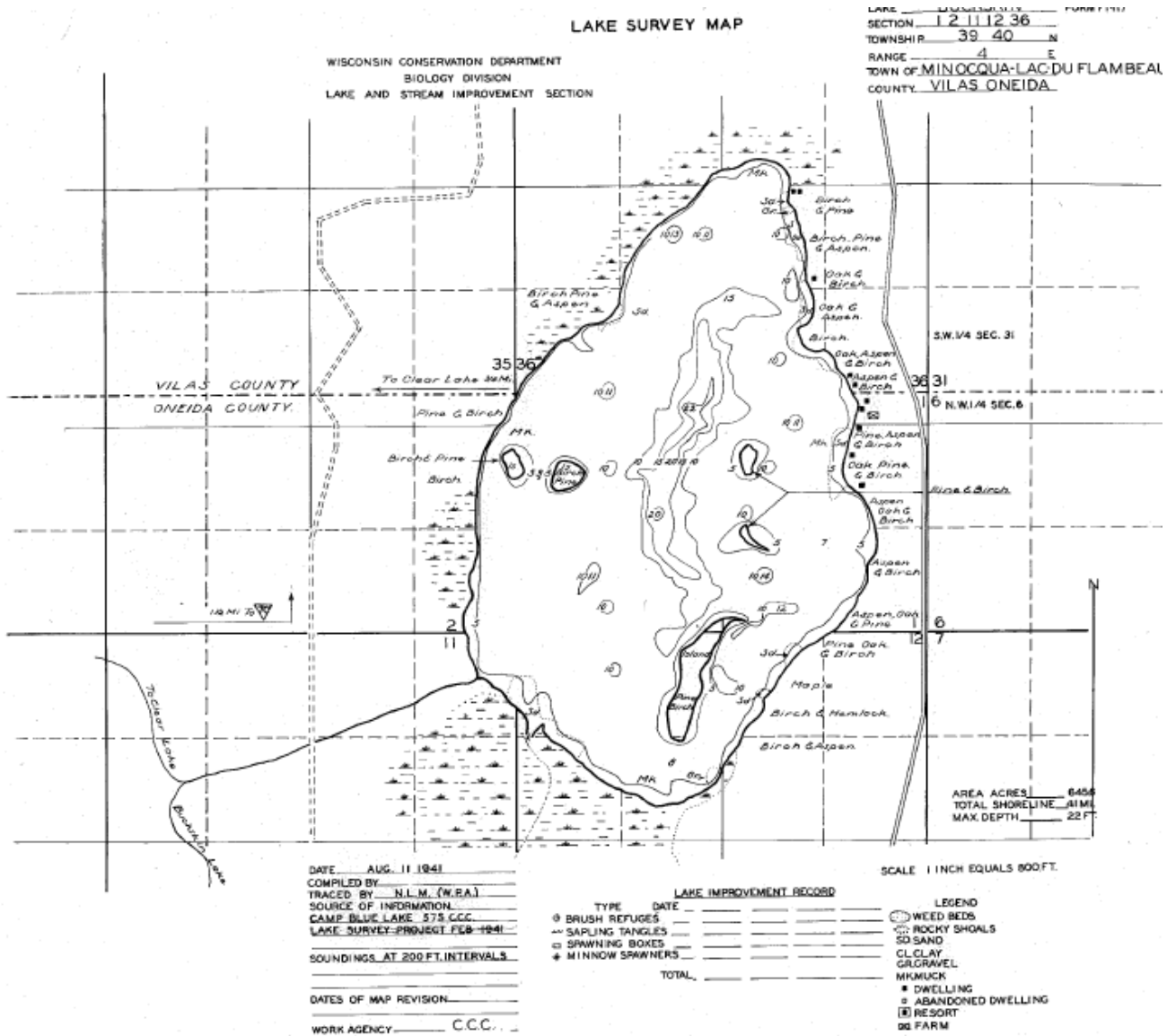
Buckskin Lake has a maximum depth of 22 feet. We had a Secchi reading of 9 feet.

Dissolved Oxygen and Temperature:

See Table 1.

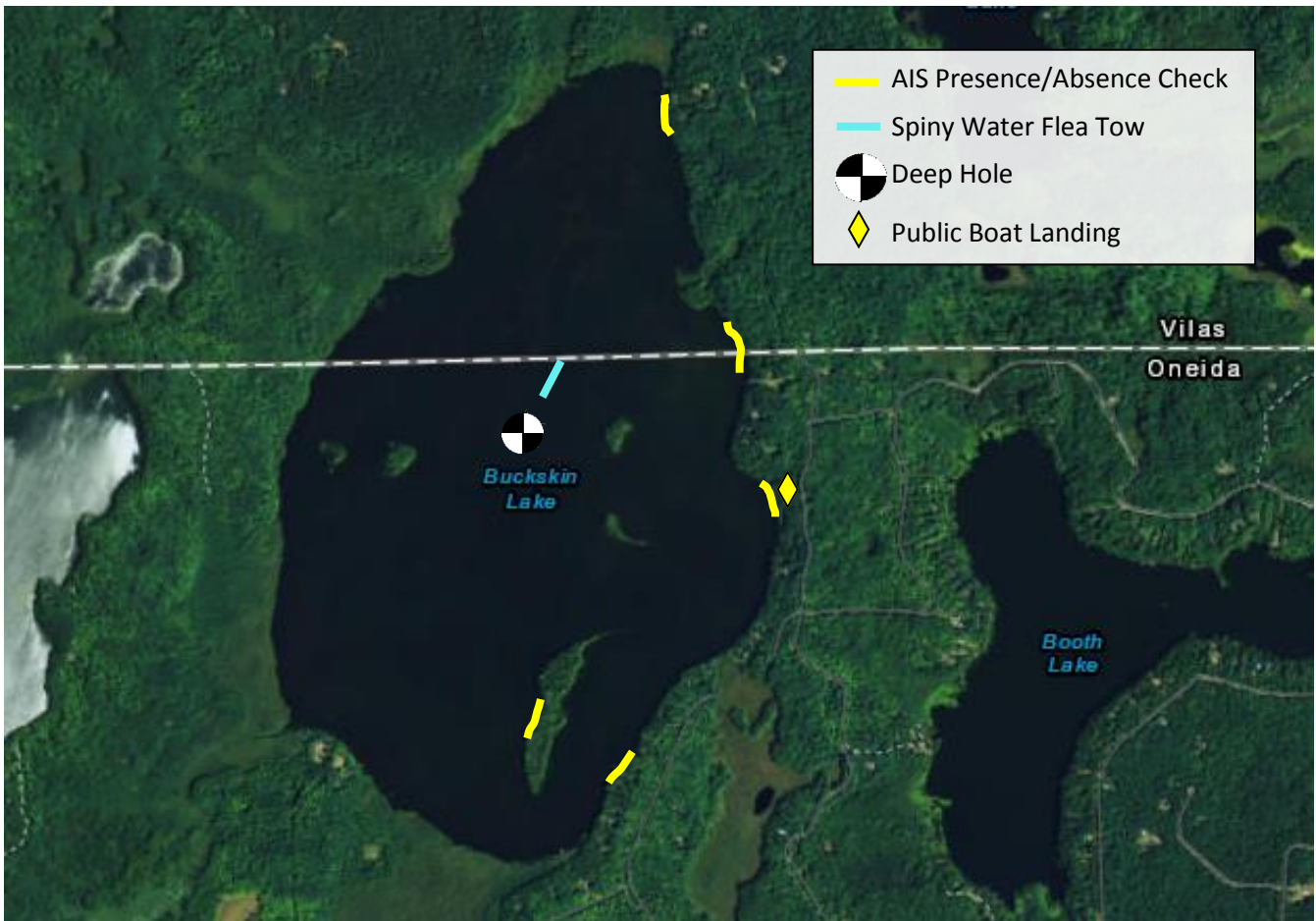


**Figure 1.** Map of Oneida County, WI with Buckskin Lake circled.



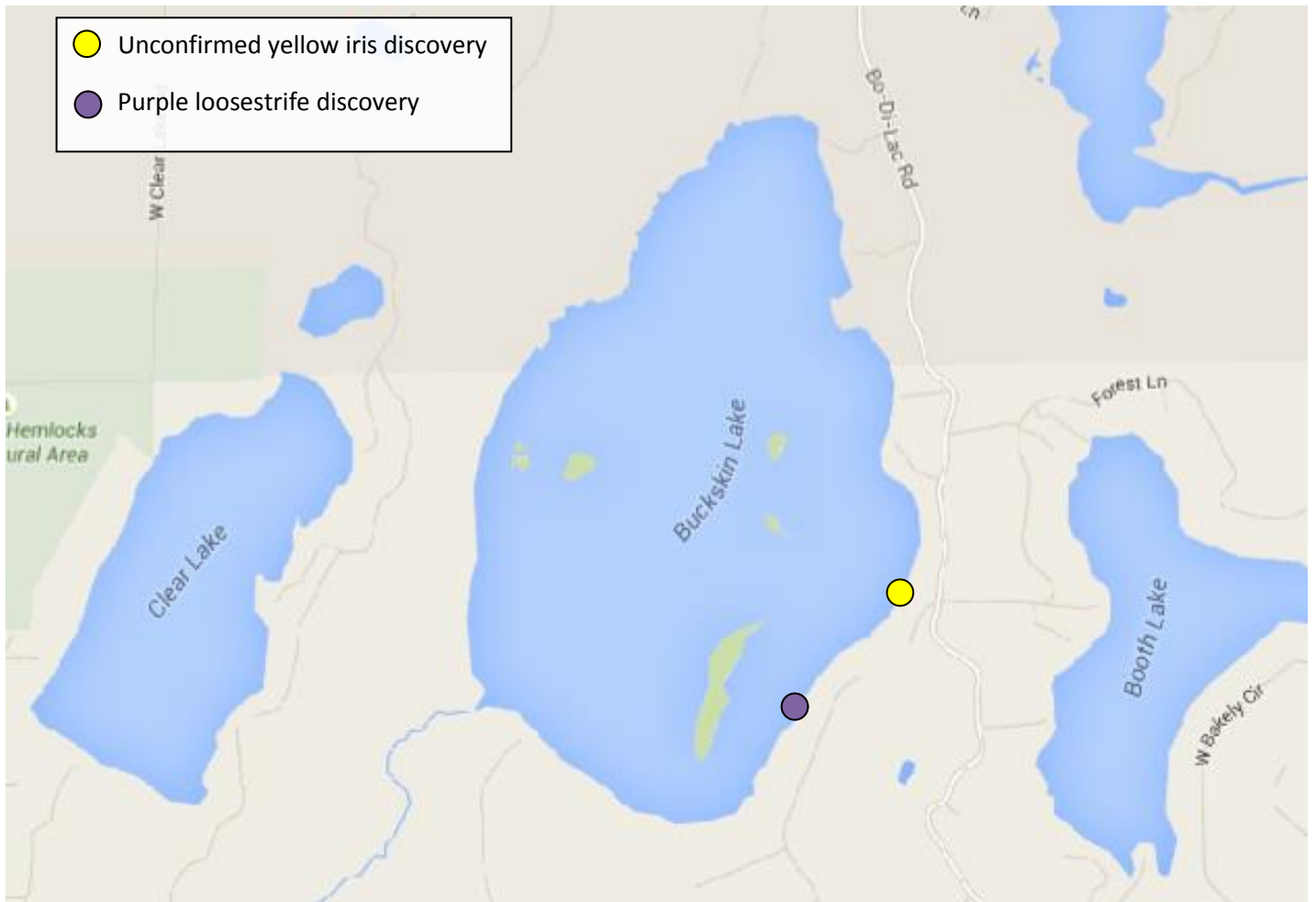
**Figure 2.** Bathymetric map of Buckskin Lake.

Map Source: Wisconsin Department of Natural Resources (608) 266-2621, Buckskin Lake – Oneida and Vilas Counties, Wisconsin – DNR Lake Map, Date – August 11, 1941 – Historical Lake Map



**Figure 3.** Map of Buckskin Lake. The deep hole site, locations monitored for AIS presence/absence checks, public boat landing, and spiny water flea tow are labeled.

Deep Hole GPS Coordinates: 45.89573435, -89.93814708



**Figure 4.** Map of Bucks Lake with new AIS discoveries.

Purple loosestrife GPS coordinates: 45.886934, -89.934166  
Unconfirmed yellow iris GPS coordinates: 45.891208, -89.927291

**Table 1.** Dissolved oxygen levels and temperature readings at the deep hole site.

<b>Depth</b>	<b>Temperature</b>	<b>Dissolved Oxygen Level</b>
1'	73.9°F	7.55 mg/L
4'	73.3°F	7.55 mg/L
7'	73.2°F	7.36 mg/L
10'	73.1°F	7.32 mg/L
13'	73.0°F	7.19 mg/L
16'	72.7°F	6.90 mg/L
19'	72.4°F	5.52 mg/L

**Resources:** <http://dnr.wi.gov/lakes/lakepages/LakeDetail.aspx?wbic=2272600&page=facts>