

# Big Carr Lake

---

Page 1: Purple Loosestrife Control of  
July 20<sup>th</sup>, 2017



## Big Carr Lake Purple Loosestrife Control Report

WBIC: 971600  
AIS in Waterbody Chinese Mystery Snail, Freshwater Jellyfish,  
Purple Loosestrife, Rusty Crawfish  
Field Date: July 20<sup>th</sup>, 2017  
Field Crew: Aubrey Nycz, AIS Project Leader, Thomas Boisvert, AIS Project  
Assistant, Derek Thorn, AIS Project Assistant, Oneida County Land  
and Water Conservation Department  
Report by: Thomas Boisvert

On July 20<sup>th</sup>, 2017, Aubrey Nycz, AIS Project Leader, Thomas Boisvert, AIS Project Assistant, and Derek Thorn, AIS Project Assistant, headed to Big Carr Lake to implement Purple Loosestrife (P.L.) control. The main duties the Oneida County team performs while implementing P.L. control is to clip flowering plants, introduce beetles, mark the entire affected area with GPS programming, and look at the surrounding areas for spreading plants.

This particular P.L. site was along County Highway D, on the shoreline of Big Carr Lake. The patches of P.L. could be clearly seen along the southern side of the highway. This area had beetles introduced in years' past, and beetle chew was evident on some of the P.L. leaves in the area. This affected area also connected to Little Carr Lake on the other side of the Highway. The two waterbodies are connected via culverts that flow underneath County Highway D.

Once at the site, the Oneida County AIS team clipped all visible flowers, introduced beetles at various locations, marked the entire area with a GPS unit, and looked at the surrounding area for spreading plants. Each particular area where the beetles were introduced was also marked on the GPS unit as well. This information can be found on Oneida County's GIS program.

### **Findings:**

#### Aquatic Invasive Species:

The patches of P.L. on Big Carr Lake appeared to have stayed the same size since last year's beetle control efforts.

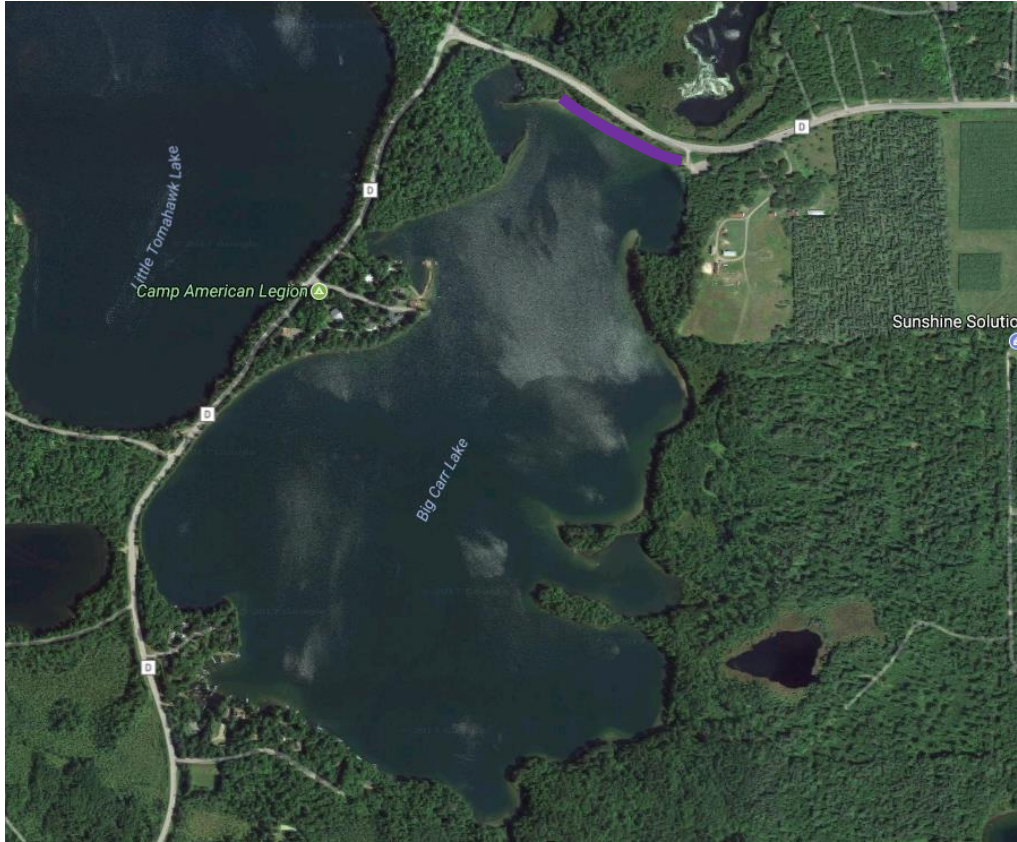


Figure 1. Map of the area affected by Purple Loosestrife, identified by a purple line.



Figure 2. Map of Oneida County, WI with Big Carr Lake's approximate location circled in red.